

Tree Planting Initiative



Wood is pretty special to us whisky drinkers, which is why we are committed to planting a tree with every artwork purchased at Angel Share Artworks, in partnership with Tree-Nation.



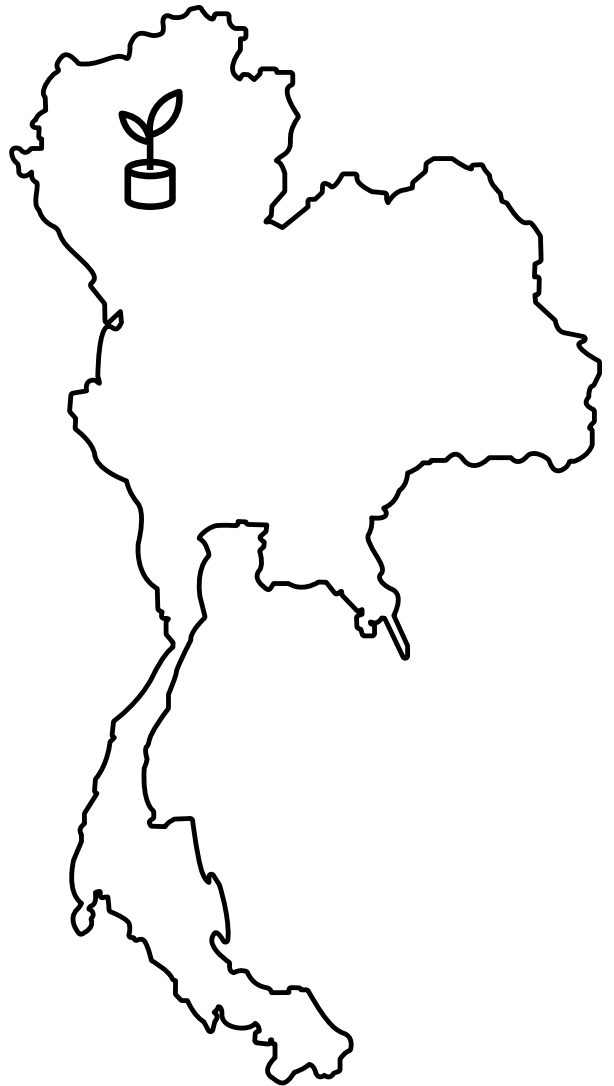
THE TREE

Tamarindus indica is a long lived and beautiful fruiting tree. The fruit grows in bean pods, and its sweet and sour flavour makes it a favourite for candies, chutneys, refreshing drinks, and is a key ingredient in a number of local cuisines.



THE PROJECT WE'RE SUPPORTING

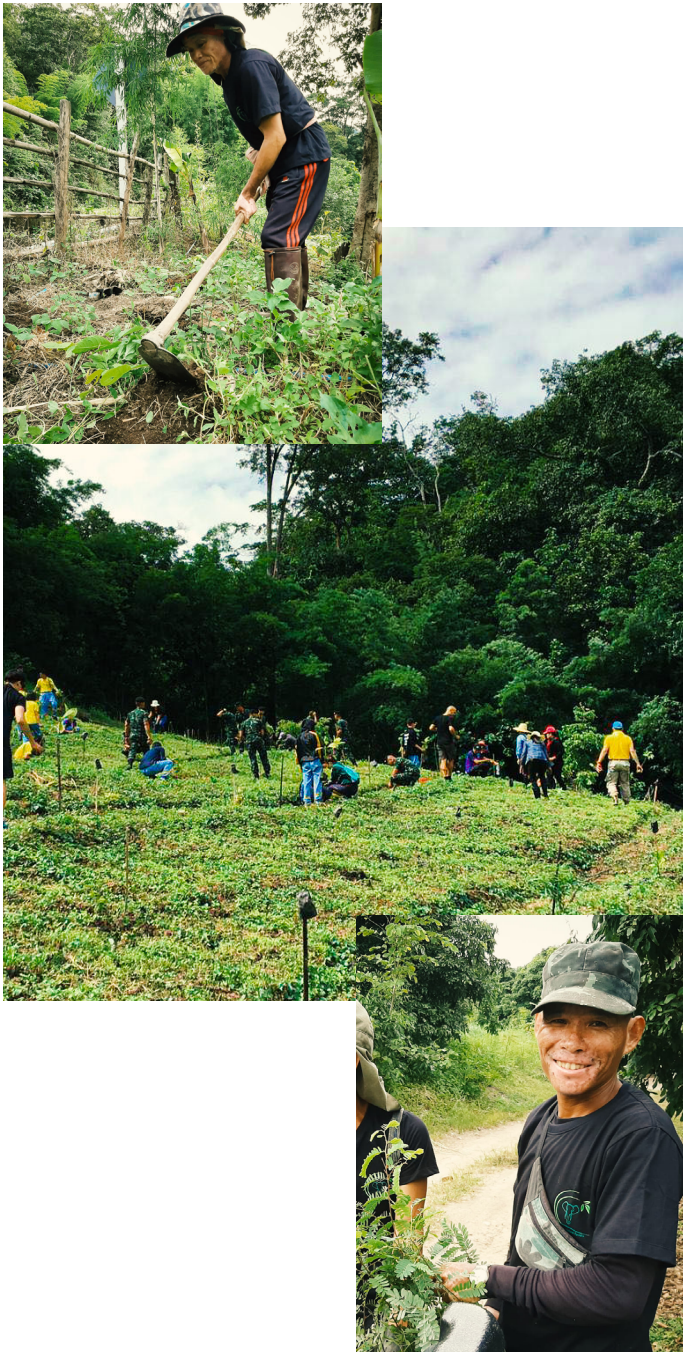
Conserve Natural Forests (CNF), Thailand, is an environmental non-profit foundation focused on forest restoration and wildlife conservation in the Mae Hong Son Province.



420KG ESTIMATED LIFETIME CO2 OFFSET

21KG ESTIMATED YEARLY CO2 OFFSET

Tree Planting Initiative



WHY THAILAND?

Tropical forest cover has declined in Thailand between 35-50% since the pre-industrial era. The loss of these forests has devastating effects at every level: local biodiversity and ecosystem function, global climate patterns, as well as for humans relying on the services provided by forests, including clean water, clean air, medicines, and food.

Between 1900 and 2006, forest cover in Thailand decreased from an estimated 85% to less than 25%. This rapid deforestation can be explained by two principal causes: the harvest of lucrative timber such as teak and rosewood as well as a sharp increase in land use change towards urban development and agriculture in order to support Thailand's booming population growth.

It is Conserve Natural Forests' goal to implement practical, proven methods of forest restoration in order to mitigate the damages resulting from deforestation and forest degradation. They strive for an optimal balance between widespread and effective forest restoration in conjunction with improving the economic and environmental quality of life for the local communities.

FUTURE PROJECTS

We are committed to our sustainability initiative, so if there is any change in availability for this project, we will partner with a new project and continue to plant trees.

“In Every Walk With Nature,
One Receives Far More Than He Seeks.”

John Muir

